

## Recombinant C5a/Complement 5a Monoclonal Antibody

catalog number: AN300198P

**Note:** *Centrifuge before opening to ensure complete recovery of vial contents.*

### Description

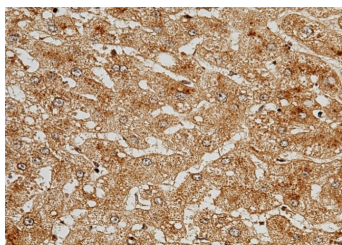
<b>Reactivity</b>	Human;Mouse;Rat
<b>Immunogen</b>	Recombinant Human Complement C5a protein
<b>Host</b>	Rabbit
<b>Isotype</b>	IgG
<b>Clone</b>	B116
<b>Purification</b>	Protein A
<b>Buffer</b>	0.2 µm filtered solution in PBS

### Applications

### Recommended Dilution

**WB:** 1:1000; IHC-P: 1:2000-1:5000

### Data



Immunohistochemistry of paraffin-embedded human cirrhosis using C5a / Complement 5a Monoclonal Antibody at dilution of 1:2000.

### Preparation & Storage

<b>Storage</b>	Store at -20°C Valid for 12 months. Avoid freeze / thaw cycles.
<b>Shipping</b>	Ice bag

### Background

This gene encodes a component of the complement system, a part of the innate immune system that plays an important role in inflammation, host homeostasis, and host defense against pathogens. The encoded preproprotein is proteolytically processed to generate multiple protein products, including the C5 alpha chain, C5 beta chain, C5a anaphylatoxin and C5b. The C5 protein is comprised of the C5 alpha and beta chains, which are linked by a disulfide bridge. Cleavage of the alpha chain by a convertase enzyme results in the formation of the C5a anaphylatoxin, which possesses potent spasmogenic and chemotactic activity, and the C5b macromolecular cleavage product, a subunit of the membrane attack complex (MAC). Mutations in this gene cause complement component 5 deficiency, a disease characterized by recurrent bacterial infections. [provided by RefSeq, Nov 2015]

### For Research Use Only